



Children with Diabetes[®] *Presents*



Friends for Life[®]

October 25–27, 2024 • Disneyland Hotel • Anaheim, CA

Dexcom

inspired by our community



Use overpatch
as instructed.

Dexcom is proud to sponsor **Children with Diabetes**. Founded in 1999, Dexcom has emerged as a leader of diabetes care technology through innovative continuous glucose monitoring (CGM) systems. In partnership with our healthcare providers, we have empowered more than 1 million people living with diabetes in the US.

Learn more about Dexcom and those who inspire us at dexcom.com/warriors



Dexcom, Dexcom Clarity, Dexcom Follow, Dexcom One, Dexcom Share, and any related logos and design marks are either registered trademarks or trademarks of Dexcom, Inc. in the United States and/or other countries. ©2022 Dexcom, Inc. All rights reserved. LBL-1001464 Rev003



Dear CWD Friends,

Welcome to Friends for Life Anaheim 2024!

For more than two decades, we have worked hard to develop and refine CWD's regional conferences with the intent of offering excellent programming for adults and children in a smaller, more intimate atmosphere than our big summer conference in Orlando. It is our hope that over the course of this weekend, you have opportunity to meet every other person in attendance, whether they are faculty, sponsors, exhibitors, staff, or simply other attendees like you. And, by Sunday afternoon, we hope that you will have new FFLs – friends for life – to support you and your family in your journey with type 1 diabetes.

Please take a few minutes to look over the schedule for Friday, Saturday, and Sunday. During some time slots for adults, we have scheduled only one speaker. At other times, we will divide into breakout sessions. You may attend any of the adult sessions; no sign-up is necessary. Sessions for adults and parents are in the Magic Kingdom 1-4 rooms on the upper level of the Disneyland Conference Center.

Breakfasts are in Magic Kingdom 1-4, Lunch will be served on the Adventure Lawn, and Refreshment Breaks are in the Sleeping Beauty Pavilion (along with the exhibits) on Saturday, and in Magic Kingdom Foyer East on Sunday.

Children's sessions are located as follows:

- Teens (ages 13-17):** Adventure room in the Adventure Tower
- Tweens (ages 9-12):** Monorail in the lower level
- Elementary (ages 6-8):** Castle in the lower level
- Kiddie Kove (ages 0-5)** B-Ticket in the upper level

The kids will report to these rooms each session, each day. Please note that while we will always check a child's blood glucose if there is a question or if a child doesn't feel well, we ask that you continue to manage your child's diabetes as you would at home. We do have low supplies in every room and at registration.

We'd like to thank the staff, volunteers, and speakers who are with us this weekend. We know that travel isn't as easy as it used to be, and we so appreciate you bringing your energy, knowledge, and support to those in attendance. You make a difference. We appreciate you.

Finally, a big thank you to our sponsors and exhibitors. Holding a Friends for Life conference is expensive and costs more than double per person than what we charge for registration. We can hold our events because of your generosity, both of funding and time. Your consistent support has made these regional FFLs possible year after year – for nearly 25 years! You are all truly friends for life.

Have a wonderful conference!



Jeff Hitchcock

Founder, President, and CEO
Children with Diabetes
jeffh@childrenwithdiabetes.com



Leigh Fickling, JD, MEd, MS

Chief Operating Officer
Children with Diabetes
leigh@childrenwithdiabetes.com



Adult Program

FRIDAY, OCTOBER 25

7:00 – 9:00	Registration is located in the Magic Kingdom Ballroom Foyer West. Join us for lite bites, refreshments, and a cash bar with the Exhibitors in Sleeping Beauty Pavilion.
-------------	--

SATURDAY, OCTOBER 26

	Magic Kingdom 1	Magic Kingdom 4	Magic Kingdom 2
8:00 – 9:00	Buffet Breakfast in Magic Kingdom 1 and 4		
9:00 – 10:00	Opening Keynote - Achieving your Olympic Gold with T1D Anne Peters, MD with Special Guest Gary Hall, Jr.		
10:00 – 11:00	Refreshment Break and Exhibits Open in Sleeping Beauty Pavilion		
11:00 – 12:00	Integrating Sugar Surfing Concepts into Pumping Stephen Ponder, MD, CDCES, FAAP	Diabetes Policy, Election Season, and Your Role as an Advocate Amanda Kaufman and Jake Johnston	Frazzled Friends for Life: Moms Discussion Group Leigh Fickling, JD, MEd, MS
12:00 – 1:30	Lunch on Adventure Lawn		
1:30 – 2:30	Optimizing AID Systems using the Sugar Surfing Framework Stephen Ponder, MD, CDCES, FAAP	Setting Teens up for Success Katie Craft, CCLS	Diabetes Dads Down to Earth Benny Loebner
2:30 – 3:30	Refreshment Break and Exhibits Open in Sleeping Beauty Pavilion		
3:30 – 4:30	Islet Cell Transplant Updates Anne Peters, MD	Family Dynamics in Diabetes Jessie Wong, PhD	Adults with Diabetes Open Discussion Katie Craft, CCLS
8:00 – 10:00	Fifle Scare-e-oke: snacks, spooky desserts, drinks, and karaoke in your Halloween costume (optional).		

SUNDAY, OCTOBER 27

	Magic Kingdom 1	Magic Kingdom 4	Magic Kingdom 2
8:00 – 9:00	Buffet Breakfast in Magic Kingdom 1 and 4		
9:00 – 10:00	Women's Health and Diabetes Across the Lifespan Marina Basina, MD	Partnering with Your Healthcare Team for School Success with Diabetes Leigh Fickling, JD, MEd, MS, and Taylor Inman, MD	When your Partner has T1D Diana Naranjo, PhD
10:00 – 11:00	Refreshment Break in Magic Kingdom Foyer East		
11:00 – 12:00	Non-Insulin Medications for Diabetes Management Marina Basina, MD	Diabetes and Mental Health Diana Naranjo, PhD	Exercise with T1D Lauren Turner, MSc
12:00 – 1:30	Lunch on Adventure Lawn		
1:30 – 2:30	Table Talks: Meet Speakers for Rotating Discussions All faculty		
2:30 – 3:30	Refreshment Break in Magic Kingdom Foyer East		
3:30 – 4:30	Closing Keynote - Friends for Life: The Family You Never Knew You Needed Leigh Fickling, JD, MEd, MS,		



Youth Program

SATURDAY, OCTOBER 26				
	Kiddie Kove B Ticket	Elementary Castle	Tween Monorail	Teen Adventure
8:00 – 9:00	Buffet Breakfast in Magic Kingdom 1 and 4			
9:00 – 10:00	Welcome Activities	Ice Breakers: Connections and Team Building	Ice Breakers: Getting to know the Tweens	Icebreakers & Scavenger Hunt
10:00 – 11:00	Refreshment Break and Exhibits Open in Sleeping Beauty Pavilion			
11:00 – 12:00	Story Time Session: Healthy Eating	Fun with Food: Exploring Healthy Eating	Create Your Superhero: Powers, Costumes, and Identity	Diabetes Jeopardy: Test Your Knowledge!
12:00 – 1:30	Lunch on Adventure Lawn			
1:30 – 2:30	Kiddie Kove Yoga & Stretching	Get Connected: Special Sessions for Orange and Green Bands	Game Time with a Diabetes Twist	Sports Central: Let's Get Moving
2:30 – 3:30	Refreshment Break and Exhibits Open in Sleeping Beauty Pavilion			
3:30 – 4:30	Working Together: Crafts & Story Time	Team Challenge: Scavenger Hunt	Sports Central: Let's Get Moving	TechTalk: The Future of Diabetes & Health Tech
8:00 - 10:00	Fiffle Scare-e-oke: snacks, spooky desserts, drinks, and karaoke in your Halloween costume (optional).			

SUNDAY, OCTOBER 27				
	Kiddie Kove B Ticket	Elementary Castle	Tween Monorail	Teen Adventure
8:00 – 9:00	Buffet Breakfast in Magic Kingdom 1 and 4			
9:00 – 10:00	What's in your Lunch Bag: All About Food	Sports Central: Active Play and Friendly Competition	Food: The Fun Fuel	Thinking Traps: Don't Get Caught!
10:00 – 11:00	Refreshment Break in Magic Kingdom Foyer East			
11:00 – 12:00	Story & Craft: How Are You Feeling?	Movie Time: A Chance to Unwind	Core Memories Loading: What Makes You, You	Mindful Eating: Making Food Choices with T1D
12:00 – 1:30	Lunch on Adventure Lawn			
1:30 – 2:30	Sports Central: Fun with Fitness	Adventures in Play: Games and Team Challenges	Music Mania: Guess the Movie, Song, or Artist	Risky Business: Navigating Behaviors
2:30 – 3:30	Refreshment Break in Magic Kingdom Foyer East			
3:30 – 4:30	Goodbye Friends: Craft Time	Our FFL Scrapbook: Creating Memories and Keepsakes	Show Time: Movie Hour & Wrap Up	Closing Keynote & Wrap Up Activity

IT'S FINALLY TIME TO GET A STEP AHEAD

It's possible for you to take control and delay the onset of insulin-dependent type 1 diabetes

TZIELD is indicated to delay the onset of Stage 3 type 1 diabetes (T1D) for people 8 years and older with Stage 2 T1D.

Stage 2 T1D means that you have tested positive for 2 or more type 1 diabetes-related autoantibodies, have abnormal blood sugar levels, and do not have type 2 diabetes. It is not known if TZIELD is safe and effective in children under 8 years of age. Stage 3 T1D is when your body can't make enough insulin on its own and may require insulin injections.



Visit
TZIELD.com
to learn more

If someone in your family has type 1 diabetes (T1D), you and your loved ones are up to **15 times** more likely to develop it too. Fortunately, **TZIELD is changing the possibilities of T1D treatment.**

What is TZIELD?

TZIELD is a prescription medicine used to delay the onset of Stage 3 type 1 diabetes, which is when your body can't make enough insulin on its own and may require insulin injections. TZIELD is for **adults and children 8 years of age and older who have Stage 2 type 1 diabetes**. This means that they have tested positive for 2 or more type 1 diabetes-related autoantibodies, have abnormal blood sugar levels, and do not have type 2 diabetes.

It is not known if TZIELD is safe and effective in children under 8 years of age.

IMPORTANT SAFETY INFORMATION

What is the most important information I should know about TZIELD?

TZIELD may cause serious side effects. These include:

- **Cytokine release syndrome (CRS).** Signs and symptoms may start during the first 5 days of TZIELD treatment and could include fever, nausea, feeling tired (fatigue), headache, muscle and joint pain, or increased liver enzymes in your blood. Tell your healthcare provider right away if you develop any signs and symptoms of CRS during treatment with TZIELD
- **Decrease in white blood cells.** TZIELD may cause a decrease in a type of white blood cell called lymphocytes. A decrease in white blood cells is a serious, but common side effect that can affect your body's ability to fight infections. A decrease in white blood cell counts can happen after your first dose. Your white blood cell counts will start to go back to normal after your fifth dose of TZIELD. Some people may develop longer and more severe decreases in lymphocytes

Your healthcare provider will do blood tests to check your liver and your complete blood counts before you start treatment and during treatment with TZIELD. During and after your treatment with TZIELD, your healthcare provider will check for serious side effects, as well as other side effects, and treat you as needed. Your healthcare provider may temporarily or completely stop your treatment with TZIELD, if you develop liver problems, have a serious infection, or if your blood counts stay too low.

What should I tell my healthcare provider before receiving TZIELD?

Before or after receiving TZIELD, tell your healthcare provider about all your medical conditions, including if you:

- have a serious infection or an infection that does not go away or keeps coming back
- have recently received or are scheduled to receive an immunization (vaccine). TZIELD may affect how well a vaccine works. Tell your doctor that you are receiving TZIELD before receiving a vaccine
- are pregnant or plan to become pregnant. TZIELD may harm your unborn baby. Do not receive TZIELD during pregnancy and at least 30 days before a planned pregnancy
- are breastfeeding or plan to breastfeed. It is not known if TZIELD passes into your breast milk and if it can harm your baby. Talk to your healthcare provider about the best way to feed your baby if you receive TZIELD

Tell your healthcare provider about all the medicines you take, including prescription and over-the-counter medicines, vitamins, and herbal supplements.

What are the possible side effects of TZIELD?

The most common side effects of TZIELD include:

- rash
- leukopenia (decrease in white blood cell counts)
- headache

These are not all of the possible side effects of TZIELD. Talk to your healthcare provider for more information, and tell them about any side effects you notice. You may report side effects to the FDA at www.fda.gov/medwatch or 1-800-FDA-1088.

Please see Brief Summary of Prescribing Information on the next page.

sanofi

Visit TZIELD.com to learn more

Tziield[®]
(teplizumab-mzwv)
Injection | 2 mg/2mL

<p style="text-align: center;">SUMMARY OF INFORMATION ABOUT TZIELD® (teplizumab-mzwv) injection, for intravenous use</p>	<p>encouraged to report your pregnancy to the Provention Bio's Adverse Event reporting line at 1-800-633-1610.</p> <ul style="list-style-type: none"> are breastfeeding or plan to breast feed. It is not known if TZIELD passes into your breast milk and if it can harm your baby. Talk to your healthcare provider about the best way to feed your baby if you receive TZIELD. If you are breastfeeding, you may consider pumping and throwing away your breast milk during treatment with TZIELD and for 20 days after receiving TZIELD treatment.
<p>What is the most important information I should know about TZIELD?</p> <p>TZIELD may cause serious side effects, including:</p> <ul style="list-style-type: none"> Cytokine Release Syndrome (CRS). Signs and symptoms of CRS problems may include: <ul style="list-style-type: none"> fever muscle and joint pain headache feeling tired (fatigue) nausea increased liver enzymes in your blood <p>These signs and symptoms may start during the first 5 days of TZIELD treatment. Tell your healthcare provider right away if you develop any signs and symptoms of CRS during treatment with TZIELD.</p> <ul style="list-style-type: none"> Decrease in white blood cells. TZIELD may cause a decrease in a type of white blood cell called lymphocytes. A decrease in white blood cells is a serious, but common side effect that can affect your body's ability to fight infections. A decrease in white blood cell counts can happen after your first dose. Your white blood cell counts will start to go back to normal after your fifth dose of TZIELD. Some people may develop longer and more severe decreases in lymphocytes. <p>Your healthcare provider will do blood tests to check your liver and your complete blood counts before you start treatment and during treatment with TZIELD. During and after your treatment with TZIELD, your healthcare provider will check for serious side effects, as well as other side effects, and treat you as needed. Your healthcare provider may temporarily or completely stop your treatment with TZIELD, if you develop liver problems, have a serious infection, or if your blood counts stay too low.</p> <p>See "What are the possible side effects of TZIELD?" for more information about side effects.</p>	<p>Tell your healthcare provider about all the medicines you take, including prescription and over-the-counter medicines, vitamins, and herbal supplements.</p>
<p>What is TZIELD?</p> <p>TZIELD is a prescription medicine used to delay the onset of Stage 3 type 1 diabetes, which is when your body can't make enough insulin on its own and may require insulin injections. TZIELD is for adults and children 8 years of age and older who have Stage 2 type 1 diabetes. This means that they have tested positive for 2 or more type 1 diabetes-related autoantibodies, have abnormal blood sugar levels and do not have type 2 diabetes.</p> <p>It is not known if TZIELD is safe and effective in children under 8 years of age.</p>	<p>How will I receive TZIELD?</p> <ul style="list-style-type: none"> TZIELD is given by a healthcare provider through a needle placed in a vein (intravenous infusion) in your arm. You will receive a TZIELD infusion one-time a day, every day, for 14 days. Each TZIELD infusion will last about 30 minutes. For the first 5 days of treatment, your healthcare provider will give you medicines by mouth before starting your TZIELD infusion. These medicines include ibuprofen, naproxen or other pain relievers such as acetaminophen, an antihistamine, and an anti-nausea medicine. These medicines may help reduce symptoms of CRS such as a fever, headache, muscle and joint pain, or nausea. If you miss a scheduled infusion, your healthcare provider will continue your treatment on the next scheduled day. You will not receive 2 infusions on the same day. <p>Tell your healthcare provider if you think something will stop you from completing treatment with TZIELD.</p>
<p>Before or after receiving TZIELD, tell your healthcare provider about all your medical conditions, including if you:</p> <ul style="list-style-type: none"> have any of the conditions or symptoms listed in the section "What is the most important information I should know about TZIELD?" have a serious infection or an infection that does not go away or that keeps coming back (chronic). have recently received or are scheduled to receive an immunization (vaccine). TZIELD may affect how well a vaccine works. Tell your healthcare provider that you are receiving treatment with TZIELD before receiving a vaccine. are pregnant or plan to become pregnant. TZIELD may harm your unborn baby. Do not receive TZIELD during pregnancy and at least 30 days before a planned pregnancy. If you become pregnant while taking TZIELD, you are 	<p>What are the possible side effects of TZIELD?</p> <p>TZIELD may cause serious side effects including:</p> <ul style="list-style-type: none"> See "What is the most important information I should know about TZIELD?" <p>The most common side effects of TZIELD include:</p> <ul style="list-style-type: none"> rash leukopenia (decrease in white blood cell counts) headache <p>These are not all of the possible side effects of TZIELD. For more information, ask your healthcare provider or pharmacist. Call your doctor for medical advice about side effects. You may report side effects to the FDA at 1-800-FDA-1088. You may also report side effects to Provention Bio at 1-800-633-1610.</p> <p>General information about the safe and effective use of TZIELD.</p> <p>Medicines are sometimes prescribed for purposes other than those listed in a Medication Guide. You can ask your pharmacist or healthcare provider for information about TZIELD that is written for health professionals.</p> <p>What are the ingredients in TZIELD?</p> <p>Active ingredient: teplizumab-mzwv. Inactive ingredients: dibasic sodium phosphate, monobasic sodium phosphate, polysorbate 80, sodium chloride, and water for injection.</p> <p>The risk information here is not comprehensive. To learn more, talk about TZIELD with your healthcare provider or pharmacist. The FDA approved labeling can be found at www.tziel.com.</p> <p>TZIELD is a registered trademark of the Sanofi Group. TZIELD is manufactured by Provention Bio, a Sanofi Company. © 2024 sanofi-aventis U.S. LLC. All rights reserved. MAT-US-2400226-v1.0-01/2024</p>



Discovery is at the heart of what we do.



In the lab, we're discovering new treatments for people with diabetes. At summer camps, we're helping children with diabetes discover they're not alone. Through scholarships, we give students the tools to discover and follow their passions. Through community events, we give people living with diabetes a place to discover a supportive community.

Learn more at lilly.com/diabetes.



NO MULTIPLE DAILY INJECTIONS.
 NO TUBES.
 NO DISCONNECTING.
No kidding.



Pod shown without the necessary adhesive.

Omnipod[®] 5, the first and only tubeless, automated insulin delivery system in the U.S., is available for people with type 1 diabetes ages 2 years and older. SmartAdjust™ technology in the Pod adjusts insulin delivery based on your customized Target Glucose—helping to correct for highs and helping to protect against lows, day and night.^{1,2}

Ready to go tubeless? Get started at
omnipod.com/CWD

1. Sherr J. et al. Diabetes Care. 2022; 45:1907-1910. Single-arm multicenter clinical trial in 80 pre-school children (aged 2-5.9 yrs) with T1D. Study included a 14-day standard therapy (ST) phase followed by a 3-month AID phase with Omnipod 5 system. Mean time >10.0 mmol/L or >180mg/dL (12AM-<6AM) as measured by CGM in children ST vs. 3-mo Omnipod 5: 38.4% vs. 16.9%, P<0.0001, respectively. Mean time >10.0 mmol/L or >180mg/dL (6AM-<12AM) as measured by CGM in children ST vs. 3-mo Omnipod 5: 39.7% vs. 33.7%, P<0.0001, respectively. Mean time <3.9 mmol/L or <70 mg/dL (12AM-<6AM) as measured by CGM in children ST vs. 3-mo Omnipod 5: 3.41% vs. 2.13%, P=0.0185. Mean time <3.9 mmol/L or <70 mg/dL (6AM-<12AM) as measured by CGM in children ST vs. 3-mo Omnipod 5: 3.44% vs. 2.57%, P=0.0799.

2. Brown S. et al. Diabetes Care. 2021;44:1630-1640. Prospective pivotal trial in 240 participants with T1D aged 6 - 70 yrs. Study included a 14-day standard therapy (ST) phase followed by a 3-month Omnipod 5 hybrid closed-loop (HCL) phase. Mean time >10.0 mmol/L or >180mg/dL (12AM-<6AM) as measured by CGM in adults/adolescents and children ST vs. 3-mo Omnipod 5: 32.1% vs. 20.7%; 42.2% vs. 20.7%, P<0.0001, respectively. Mean time >10.0 mmol/L or >180mg/dL (6AM-<12AM) as measured by CGM in adults/adolescents and children ST vs. 3-mo Omnipod 5: 32.6% vs. 26.1%; 46.4% vs. 33.4%, P<0.0001, respectively. Mean time <3.9 mmol/L or <70 mg/dL (12AM-<6AM) as measured by CGM in adults/adolescents and children ST vs. 3-mo Omnipod 5: 3.64% vs. 1.17%, P<0.0001; 2.51% vs. 1.78, P=0.0456, respectively. Mean time <3.9 mmol/L or <70 mg/dL (6AM-<12AM) as measured by CGM in adults/adolescents and children ST vs. 3-mo Omnipod 5: 2.64% vs. 1.37%, P<0.0001; 2.13% vs. 1.98%, P=0.2545, respectively.

The Omnipod 5 Automated Insulin Delivery System is indicated for people with type 1 diabetes, ages 2 years and older, and adults with type 2 diabetes, ages 18 years and older. The Omnipod 5 System is intended for single patient, home use and requires a prescription. The Omnipod 5 System is compatible with the following U-100 insulins: NovoLog[®], Humalog[®], and Admelog[®]. The Omnipod 5 ACE Pump (Pod) is intended for the subcutaneous delivery of insulin, at set and variable rates, for the management of diabetes mellitus in persons requiring insulin. The Omnipod 5 ACE Pump is able to reliably and securely communicate with compatible, digitally connected devices, including automated insulin dosing software, to receive, execute, and confirm commands from these devices. SmartAdjust™ technology is intended for use with compatible integrated continuous glucose monitors

(iCGM) and alternate controller enabled (ACE) pumps to automatically increase, decrease, and pause delivery of insulin based on current and predicted glucose values. The Omnipod 5 SmartBolus Calculator is intended to calculate a suggested bolus dose based on user-entered carbohydrates, most recent sensor glucose value (or blood glucose reading if using fingerstick), rate of change of the sensor glucose (if applicable), insulin on board (IOB), and programmable correction factor, insulin to carbohydrate ratio, and target glucose value.

WARNING: SmartAdjust technology should NOT be used by anyone under the age of 2 years old. SmartAdjust technology should also NOT be used in people who require less than 5 units of insulin per day as the safety of the technology has not been evaluated in this population.

The Omnipod 5 System is NOT recommended for people who are unable to monitor glucose as recommended by their healthcare provider, are unable to maintain contact with their healthcare provider, are unable to use the Omnipod 5 System according to instructions, are taking hydroxyurea as it could lead to falsely elevated CGM values and result in over-delivery of insulin that can lead to severe hypoglycemia, and do NOT have adequate hearing and/or vision to allow recognition of all functions of the Omnipod 5 System, including alerts, alarms, and reminders. Device components including the Pod, CGM transmitter, and CGM sensor must be removed before Magnetic Resonance Imaging (MRI), Computed Tomography (CT) scan, or diathermy treatment. In addition, the Controller and smartphone should be placed outside of the procedure room. Exposure to MRI, CT, or diathermy treatment can damage the components. Visit www.omnipod.com/safety for additional important safety information.

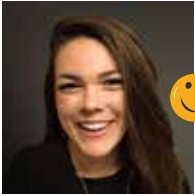
WARNING: DO NOT start to use the Omnipod 5 System or change settings without adequate training and guidance from a healthcare provider. Initiating and adjusting settings incorrectly can result in over-delivery or under-delivery of insulin, which could lead to hypoglycemia or hyperglycemia.

©2024 Insulet Corporation. Omnipod, the Omnipod 5 logo, and SmartAdjust are trademarks or registered trademarks of Insulet Corporation. All rights reserved. All other trademarks are the property of their respective owners. The use of third party trademarks does not constitute an endorsement or imply a relationship or other affiliation. INS-OHS-10-2024-00005 v1.0



Marina Basina, MD

Sunday	9:00 - 10:00	Magic Kingdom 1	Women's Health and Diabetes Across the Lifespan
Sunday	11:00 - 12:00	Magic Kingdom 1	Non-Insulin Medications for Diabetes Management
Sunday	1:30 - 2:30	Magic Kingdom 1 and 4	Table Talks: Meet Speakers for Rotating Discussions



Katie Craft, CCLS

Saturday	1:30 - 2:30	Magic Kingdom 4	Setting Teens up for Success
Saturday	3:30 - 4:30	Magic Kingdom 2	Adults with Diabetes Open Discussion
Sunday	1:30 - 2:30	Magic Kingdom 1 and 4	Table Talks: Meet Speakers for Rotating Discussions



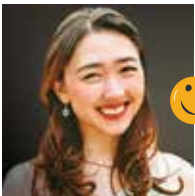
Leigh Fickling, JD, MEd, MS

Saturday	11:00 - 12:00	Magic Kingdom 2	Frazzled Friends for Life: Mom's Discussion Group
Sunday	9:00 - 10:00	Magic Kingdom 4	Partnering with Your Healthcare Team for School Success with T1D
Sunday	1:30 - 2:30	Magic Kingdom 1 and 4	Table Talks: Meet Speakers for Rotating Discussions
Sunday	3:30 - 4:30	Magic Kingdom 1 and 4	Closing Keynote: Friends for Life: The Family You Never Knew You Needed



Taylor Inman, MD

Sunday	9:00 - 10:00	Magic Kingdom 4	Partnering with Your Healthcare Team for School Success with T1D
Sunday	1:30 - 2:30	Magic Kingdom 1 and 4	Table Talks: Meet Speakers for Rotating Discussions



Amanda Kaufman

Saturday	11:00 - 12:00	Magic Kingdom 4	Diabetes Policy, Election Season, and Your Role as an Advocate
Sunday	1:30 - 2:30	Magic Kingdom 1 and 4	Table Talks: Meet Speakers for Rotating Discussions



Jake Johnston

Saturday	11:00 - 12:00	Magic Kingdom 4	Diabetes Policy, Election Season, and Your Role as an Advocate
Sunday	1:30 - 2:30	Magic Kingdom 1 and 4	Table Talks: Meet Speakers for Rotating Discussions



Benny Loebner

Sunday	1:30 - 2:30	Magic Kingdom 2	Diabetes Dads Down to Earth
Sunday	1:30 - 2:30	Magic Kingdom 1 and 4	Table Talks: Meet Speakers for Rotating Discussions



Diana M. Naranjo, PhD

Saturday	11:00 - 12:00	Monorail	Tweens: Create Your Superhero: Powers, Costumes and Identity
Saturday	1:30 - 2:30	Castle	Elem: Get Connected: Special Sessions for Orange and Green Bands
Sunday	9:00 - 10:00	Magic Kingdom 2	When Your Partner has T1D
Sunday	11:00 - 12:00	Magic Kingdom 4	Diabetes and Mental Health
Sunday	1:30 - 2:30	Magic Kingdom 1 and 4	Table Talks: Meet Speakers for Rotating Discussions



Kristen O'Dell, MS, RD, CDCES

Saturday	11:00 - 12:00	Castle	Elem: Fun with Food: Exploring Healthy Eating
Sunday	9:00 - 10:00	Monorail	Tweens: Food: The Fun Fuel
Sunday	11:00 - 12:00	Adventure	Teens: Mindful Eating: Making Food Choices with T1D



Anne Peters, MD

Saturday	9:00 - 10:00	Magic Kingdom 1 and 4	Opening Keynote: Achieving your Olympic Gold with T1D with Gary Hall Jr.
Saturday	3:30 - 4:30	Magic Kingdom 1	Islet Cell Transplant Updates



Stephen W. Ponder, MD, FAAP, CDE

Saturday	11:00 - 12:00	Magic Kingdom 1	Integrating Sugar Surfing Concepts into Pumping
Saturday	1:30 - 2:30	Magic Kingdom 1	Optimizing AID Systems Using Sugar Surfing Framework
Sunday	1:30 - 2:30	Magic Kingdom 1 and 4	Table Talks: Meet Speakers for Rotating Discussions



Lauren Turner, MSc

Sunday	11:00 - 12:00	Magic Kingdom 4	Exercise and T1D
Sunday	1:30 - 2:30	Magic Kingdom 1 and 4	Table Talks: Meet Speakers for Rotating Discussions



Jessie J. Wong, PhD

Saturday	3:30 - 4:30	Magic Kingdom 4	Family Dynamics in Diabetes
Sunday	9:00 - 10:00	Adventure	Teens: Thinking Traps
Sunday	11:00 - 12:00	Monorail	Tweens: Core Memories Loading: What Makes You, You
Sunday	1:30 - 2:30	Magic Kingdom 1 and 4	Table Talks: Meet Speakers for Rotating Discussions

Scan the QR Code to learn more about our FFL Faculty



Gold Sponsors



Dexcom

Dexcom, Inc. empowers people to take real-time control of health through innovative continuous glucose monitoring (CGM) systems. Headquartered in San Diego, Calif., and with operations across Europe and select parts of Asia/Oceania, Dexcom has emerged as a leader of diabetes care technology. By listening to the needs of users, caregivers, and providers, Dexcom works to simplify and improve diabetes management around the world. For more information about Dexcom CGM, visit www.dexcom.com.



Insulet Corporation (NASDAQ: PODD), headquartered in Massachusetts, is an innovative medical device company dedicated to simplifying life for people with diabetes and other conditions through its Omnipod product platform. The Omnipod Insulin Management System provides a unique alternative to traditional insulin delivery methods. With its simple, wearable design, the disposable Pod provides up to three days of non-stop insulin delivery, without the need to see or handle a needle. Insulet's latest innovation, the Omnipod® 5 Automated Insulin Delivery System, is a tubeless automated insulin delivery system, integrated with a continuous glucose monitor to manage blood sugar with no multiple daily injections, zero fingersticks, and is fully controlled by a compatible personal smartphone. Insulet also leverages the unique design of its Pod by tailoring its Omnipod technology platform for the delivery of non-insulin subcutaneous drugs across other therapeutic areas. For more information, please visit: insulet.com and omnipod.com.

sanofi

Sanofi is an innovative global healthcare company, driven by one purpose: we chase the miracles of science to improve people's lives. Our team, across some 100 countries, is dedicated to transforming the practice of medicine by working to turn the impossible into the possible. We provide potentially life-changing treatment options and life-saving vaccine protection to millions of people globally, while putting sustainability and social responsibility at the center of our ambitions.



Tandem Mobi

The Tiny Pump for Big Dreamers

The Tandem Mobi automated insulin delivery system **predicts and helps prevent highs and lows** so the whole family can wake up happy.

Anna
diagnosed 2020



tandemdiabetes.com

Tandem Mobi represented is true to actual size.

Important Safety Information: RX Only. Indicated for patients with type 1 diabetes, 6 years and older. Safety info: tandemdiabetes.com/safetyinfo.

WARNING: Control-IQ technology should not be used by people under age 6, or who use less than 10 units of insulin/day, or who weigh less than 55 lbs.

©2024 Tandem Diabetes Care, Inc. All rights reserved. Tandem Diabetes Care, the Tandem logo, Control-IQ, and Tandem Mobi are either registered trademarks or trademarks of Tandem Diabetes Care, Inc. in the United States and/or other countries. CM-003339_A



Advocacy Sponsor



Lilly

We're a medicine company turning science into healing to make life better for people around the world.

Harnessing the power of biotechnology, chemistry and genetic medicine, our scientists are urgently advancing science to solve some of the world's most significant health challenges. It all started nearly 150 years ago with a clear vision from founder Colonel Eli Lilly: "Take what you find here and make it better and better."

But we're not only dedicated to making medicines. We go beyond medicine to deliver innovative clinical trials that reflect the diversity of our world and work to ensure our medicines are accessible and affordable. Learn more at www.lilly.com/who-we-are/about-lilly.

Does anyone in your family have **TYPE 1** DIABETES?

Then you or your child is up to **15x more likely** to get it too.



Just 1 blood test can spot type 1 early—before you need insulin. You can get screened at a doctor's office or lab, or with at-home options.



SCREEN IT
LIKE YOU
MEAN IT

Don't wait—talk to your or your child's doctor
and learn more at ScreenForType1.com

▼ SCAN ME ▼



ScreenForType1.com

Sanofi does not provide medical advice, diagnosis, or treatment—information is provided for educational purposes only. Your doctor is the best source of health information. Talk to your doctor if you have any questions about your health or treatment.

sanofi

©2024 Sanofi-Aventis U.S. LLC. All rights reserved. MAT-US-2311190-v1.0-01/2024



Silver Sponsor



TANDEM
Diabetes Care

Tandem Diabetes Care creates new possibilities for people living with diabetes, their loved ones, and their healthcare providers through a positively different experience. We manufacture and sell the t:slim X2 insulin pump with Control-IQ technology, but we're so much more than that. Our company's human-centered approach to design, development, and support delivers innovative products and services for people who use insulin. Since many of our own team members live with type 1 diabetes, or have a loved one impacted by diabetes, the work is personal, and we are committed to the cause. Learn more at tandemdiabetes.com.

Be ready with Gvoke HypoPen[®]



See why Tristan, a D1 college athlete, carries Gvoke HypoPen with him at all times as his safety net.



Watch his story

TRISTAN

Actual Gvoke[®] Patient

Learn more at gvokeglucagon.com

Gvoke[®], Gvoke HypoPen[®], the droplet design and their associated logos are trademarks of Xeris Pharmaceuticals, Inc. Copyright ©2024 Xeris Pharmaceuticals, Inc. All rights reserved. US-GVK-24-00149 09/24

GVOKE
HypoPen[®]
(glucagon injection)



Bronze Sponsors



DIABETES PATIENT ADVOCACY COALITION

The **Diabetes Patient Advocacy Coalition (DPAC)** is an alliance of people with diabetes, caregivers, patient advocates, health professionals, diabetes organizations and companies working collaboratively to promote and support public policy initiatives to improve the health of all 37.3 million Americans with diabetes. We train people in the diabetes community on how to be advocates for themselves and their families. We work to ensure quality of and access to care, medications, and devices for patients living with diabetes; and to educate, inspire, and empower patient advocates as well as lawmakers toward meaningful action on diabetes.

DIAMYD MEDICAL

Diamyd Medical develops precision medicine therapies for the prevention and treatment of Type 1 Diabetes and LADA (Latent Autoimmune Diabetes in Adults). Diamyd® is an antigen-specific immunotherapy for the preservation of endogenous insulin production that has Orphan Drug Designation in the U.S. and, in February 2024, was granted Fast Track designation by the U.S. FDA. DIAGNODE-3, a confirmatory Phase III trial is actively recruiting patients with recent-onset Type 1 Diabetes in eight European countries and in the US. Significant results have previously been shown in a large genetically predefined patient group – in a large-scale meta-analysis and in the Company's European Phase IIb trial, where Diamyd® was administered directly into a superficial lymph node in children and young adults with recently diagnosed Type 1 Diabetes.

Medtronic

Medtronic is working together with the global community to change the way people manage diabetes. The company aims to transform diabetes care by expanding access, integrating care, and improving outcomes, so people living with diabetes can enjoy greater freedom and better health.

Sequel maker of twist

Sequel is dedicated to developing next-generation drug-delivery advancements, starting with its FDA-cleared device, the twist™ Automated Insulin Delivery (AID) system powered by Tidepool. The twist system integrates innovative technologies to reimagine insulin delivery and sets a new standard for diabetes management providing simplified access and personalized control for PWD.

TRANSCEND™

Transcend provides fast-acting, portable glucose solutions designed for critical blood sugar situations. Our durable, pre-packaged glucose gels and shots ensure rapid response to hypoglycemia and offer reliable and precise glucose level management. Trusted by healthcare professionals, Transcend products are essential for effective, on-the-go diabetes care and support in critical moments.

xeris PHARMACEUTICALS

Xeris Pharmaceuticals, Inc., the maker of Gvoke HypoPen® (glucagon injection), is dedicated to unlocking the potential of glucagon. We believe that our technology can have a profound impact on the lives of patients and their families. That's why we are proud to be the first to develop liquid glucagon, but that's just the beginning. We're also studying how our formulation technology can impact patients with other conditions. We have a persistent drive to pursue solutions that have the potential to change lives. Get to know us and see how our technology is unlocking the potential of today's medicines at www.xerispharma.com

DIABETES LEADERSHIP COUNCIL

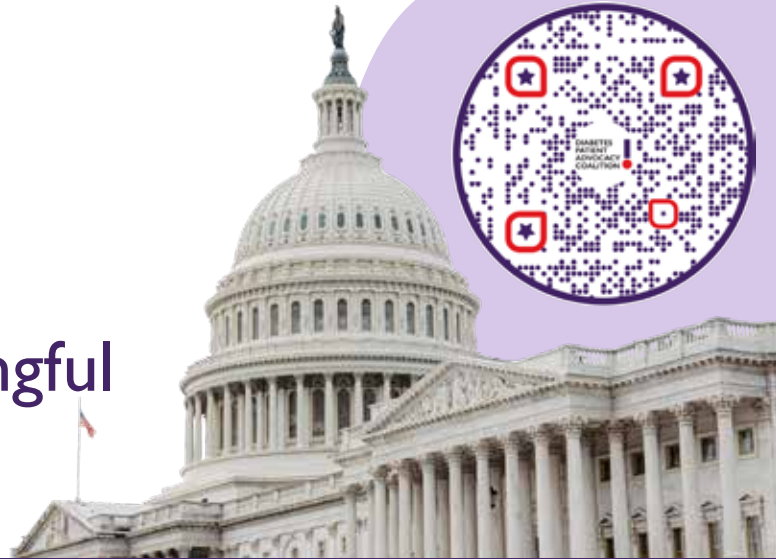


DIABETES PATIENT ADVOCACY COALITION



Our Mission:

To educate, inspire, and empower advocates and lawmakers toward meaningful action on diabetes.




Get Involved

Register as a diabetes Champion & learn more here:
DiabetesPAC.org | DiabetesLeadership.org

 @DiabetesPAC

 Diabetes Patient Advocacy Coalition

 @DiabetesPAC
@DiabetesLeaders

 Diabetes Patient Advocacy Coalition
Diabetes Leadership Council





Friends for Life[®] Orlando 2025

July 8–13, 2025 • Disney's Coronado Springs Resort • Orlando, FL



For more information and to register and book your hotel, scan the QR code, or visit: FFL.is/Orlando.



REGISTRATION OPENS JANUARY 2025

Friends for Life Orlando 2025

Looking to connect in a league of extraordinary people who truly get you? Join us at Friends for Life—it's going to be a heroic adventure!

Join us from July 8–13, 2025, at Disney's Coronado Springs Resort, where heroes gather and the future is shaped. Prepare for a action-packed adventure as we unveil the latest advancements in diabetes technology and treatment. With "Sugar Shield" and "Glucose Guardian," our very own "superheroes," leading the charge, you'll join forces with a league of extraordinary individuals, forging unbreakable bonds and conquering new challenges. This isn't just a conference—it's an epic mission to empower and protect our community.



July 8–13, 2025



Disney's Coronado Springs Resort



Registration cost for all ages: \$300*

Registration price includes the following:

- All sessions and session materials for adults and children
- Kiddie Kove for children ages 0-5
- Wednesday Grand Opening of the Exhibition Hall Dessert Reception
- Thursday breakfast, lunch, and snack breaks
- Thursday Family and Friends Banquet (dinner)
- Friday lunch and snack breaks
- Friday Park Day for teens
- Saturday social events
- Sunday Farewell Breakfast
- All of the various social events
- One t-shirt per registered person

Scholarships are available! CWD offers a limited number of scholarships to a limited number of applicants. Full scholarships can cover the cost of registration for up to four people and your hotel room for five days. Scholarship applications will be available this winter at FFL.is/scholarships.

*Price will increase to \$350 on June 6, 2025

T1D STUDY

JUST DIAGNOSED WITH TYPE 1 DIABETES?

**You might qualify to
participate if you are:**

- ✓ Diagnosed within the last 6 months
- ✓ Between 12 and 29 years old
- ✓ Living in the USA or Europe

**Diamyd Medical's investigational
therapy, GAD-65, contains the
GAD enzyme. GAD-65 tells your
immune system to stop attacking
and destroying the cells in your
pancreas that produce insulin.**



DIAMYD
MEDICAL

DIAGNODE-3.COM



Friends for Life® Arlington 2025



For more information,
scan the QR code, or visit:

FFL.is/Arlington.



REGISTRATION OPENS SOON

Friends for Life® Arlington 2025

Looking to connect in an atmosphere where people really understand you? At Friends for Life, everyone beeps! Join us for Friends for Life Arlington on March 7–9, 2025 at the Renaissance Arlington Capital View Hotel.

Immerse yourself in a vibrant community that includes world-renowned faculty, individuals of all ages living with diabetes, and supportive families – including siblings and children of adults with type 1 diabetes. This extraordinary weekend is designed to provide enriching educational sessions featuring cutting-edge diabetes management ideas, engaging discussion groups, and a platform to share your personal journey while inspiring and supporting others on a similar path.

Learn more today at [FFL.is/Arlington](https://ffl.is/Arlington), and join us in this much-anticipated gathering of our cherished Fiffles community. We can't wait to see you there!



March 7–9, 2025



Registration (all ages): \$150



Renaissance Arlington Capital View Hotel

Registration includes:

- All sessions for adults and children
- Kiddie Kove for the youngest attendees (ages 0-5)
- Access to the Exhibit areas
- Reception on Friday evening
- Saturday breakfast, lunch, and snack breaks
- Sunday breakfast, lunch, and snack breaks
- One t-shirt per registered person

*Registration will increase to \$250 per person on 02/15/25, pending availability.

Is cost a concern? A limited amount of scholarships are available for families and young adults. Email us at conference@childrenwithdiabetes.com to inquire.

Medtronic

MiniMed™ 780G system

Designed for real life™

The only system with Meal Detection™ technology,* for those moments when carbs are undercounted or a meal dose is occasionally missed**

**Come learn more and connect with us
at the Friends for Life Anaheim exhibit hall!**



**Alex and
Connor**

Medtronic Champions
living with T1D

*Taking a bolus 15 - 20 minutes before a meal helps to keep blood sugar levels under control after eating.

**Refers to SmartGuard™ feature. Individual results may vary.

Important Safety Information for MiniMed™ 780G System: MiniMed™ 780G System is for type 1 ages 7 and over. Prescription required.

WARNING: Do not use SmartGuard™ feature for people who require less than 8 units or more than 250 units of insulin/day. For details, please visit <https://www.medtronicdiabetes.com/support/download-library/user-guides> and www.medtronicdiabetes.com/importantsafetyinformation for complete details.

US-DBA-2400252 ©2024 Medtronic. All rights reserved. Medtronic, Medtronic logo and Engineering the extraordinary are trademarks of Medtronic. All other brands are trademarks of a Medtronic company.

Better Together Society

The Better Together Society (BTS) is CWD's monthly giving program. Through the BTS, your generosity funds scholarships and activities for the Friends for Life Conferences. Joining is easy! By setting up a recurring monthly donation of at least \$10, you automatically become part of this big-hearted, charitable group. BTS members are recognized in CWD's conference and annual publications. You can become a member of the Better Together Society today and join the ranks of the members listed below by registering at cwd.is/BTS.

Better Together Society Members

Sunshine Abel	The Deitle Norris Family	Anita Green	Benny & Pam Loebner	Jisel Parra	Joanne Stroud
Matt Aguiar	Rebecca DeLong	Tina Hammer	Kristianne Lore-Keyser	Stewart Perry	Sara Tolliday
Lisa Anderson	Jimmy & Liz Dodson	Kelly Hansen	Amy Malliett	Lizzie Poe	The Town Family
Nicole Austin	Lisa Dreasher	Michelle Haselhorst	Bonnie Martin	Ernesto Prado	Andrew Waibel
Mary Babin	Stephen Duane	Zoe Heineman	Dawn Miller	Rachel Price	Kathryn Westphal
Joan Bardsley	Susan Feldt	Jeff & Brenda Hitchcock	Ashlyn Mills	Ed Raskin	Austin White
Morgan Bednarczyk	Ava Fickling	Jillian Holmes	Tim & Mary Mills	Kenneth Rodenheiser	Amy Witherington
Laura Billetdeaux	Davis Fickling	Kara Hunsche	Pantea Minnock	Dave Rudolph	Robyn Wright
Carolyn Billetdeaux	Leigh Fickling	George & Judy Huntley	Heather Mitchell	Jeremy & Lauren Salko	Kate Zimmerman
Teresa Brandt	Mark Fox	Rebecca Jervey	Wendi Moldthan	Carla Scott	
Sean Brennan	Christy Gagnier	The Johnson Family Trust	Kenneth Moritsugu	Kevin Sims	
Kathy Brown	John Gallagher	Jan Kavookjian	The Mosby Family	Jenny Sloan	
Erin Callahan	The Geren Family	Kimberly Kirby	Brian & Megan Mulherin	Erica Smith	
Jessica Carey	Tina Ghosn	Jami Klein	Nancy Murphy	Jordan & Sasha Squibb	
Brianne Carter	Elizabeth Goldstein	Hannah Klippel	The O'Dell Family	Sheila Stinson	
Leslie Collins	Parker Grand	Rachel Knight	Bob O'Connell	Jim Stone	
Kristen Conklin	Shelley Grand	Dana Koenig	Kerry Ogrodowczyk	Andrew Stone	
Carrie Cowan	Stephen Grant	Corey Lackey	Hannah Opdenaker	Kimberly Stott	
Sarah DeBauge	Nia Grant	Lauren Lanning	Rachale Park	Kate Stricklin	

Members as of 10/02/24

CWD Fiffle Circle

The Fiffle Circle is CWD's individual giving program which recognizes cumulative giving and major gifts. Fiffle Circle members are recognized with a lapel pin upon entering the circle at the \$10,000 level. The Fiffle Circle recognizes at each giving level (listed below as of February 1, 2024) with a CWD challenge coin made of solid bronze, silver, and gold. Members of the Fiffle Circle are also recognized each year in CWD's annual report and conference programs.



Fiffle Circle Challenge Coins

CWD Fiffle Circle Members

Chairman's Circle

Anonymous +
Anonymous Family +
Helen Finegold and Will Nowak +
Petrovic Gubin Foundation +
The Stoddard Salko Family +

President's Circle

Anonymous Family +
George and Judy Huntley +
Kevin and Mimi Sayer +

Partner's Circle

Anonymous Family +
The Deitle Norris Family +
Government Scientific Source
Stewart Perry +

Fiffle Circle

The Abel Family
Anonymous
Gigliola and Edward Hawthorne +
The Geren Family
Claudia Graham
Drs. George and Zuzana Grunberger +
Jeff and Brenda Hitchcock
Al and Sue Johnson
The Karitis Family
Macey's Believers, Inc.
Teresa and Troy Littlefield
The Lukhard Family
The Merwin Family
The Moritsugu Family

+ denotes a major gift donation in 2024 or earlier

Levels of Giving

Diamond Circle (\$500,000)

Diamond Embellished CWD Challenge Coin

Chairman's Circle (\$150,000)

Gold Clad Solid Silver CWD Challenge Coin

President's Circle (\$75,000)

Silver CWD Challenge Coin

Partner's Circle (\$25,000)

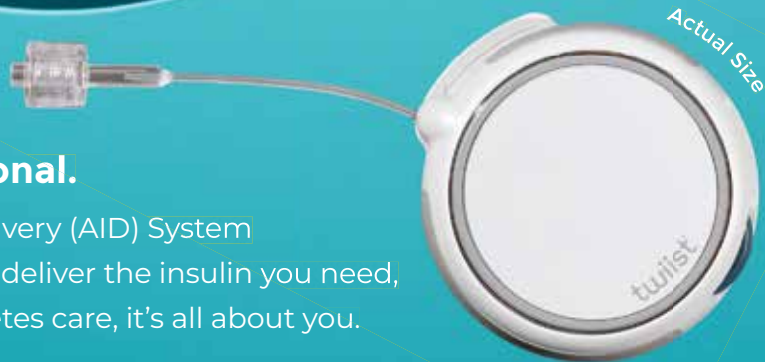
Bronze CWD Challenge Coin

Fiffle Circle (\$10,000)

Fiffle Circle Lapel Pin and CWD Challenge Coin

COMING SOON

A breakthrough in diabetes care



The way you manage diabetes is personal.

That's why our new twiist™ Automated Insulin Delivery (AID) System powered by Tidepool Loop is uniquely designed to deliver the insulin you need, when you need it. Because when it comes to diabetes care, it's all about you.



Visit the twiist table

and check out the twiist AID System in person!

"twiist" and the twiist logo are licensed trademarks of Sequel Med Tech, LLC. "Tidepool" and the Tidepool logo are trademarks of Tidepool Project, a fully-qualified 501(c)(3) nonprofit organization.

© 2024 Sequel Med Tech, LLC. All rights reserved. MAT-0077 Ver. 1.0 9/24



Join the
twiist list

TRANSCEND™

10%
OFF



15 grams of glucose
- NO MORE, NO LESS -
every time.

Transcend takes great pride in its ongoing partnership with Children with Diabetes



Upcoming Conferences

2025

Friends for Life Arlington 2025 at the Renaissance Arlington Capital View Hotel
Arlington, VA | March 7-9, 2025

Friends for Life Orlando 2025 at Disney's Coronado Springs Resort
Lake Buena Vista, Florida | July 8-13, 2025

Friends for Life Seattle 2025 at the Renaissance Seattle
Seattle, Washington | November 7-9, 2025

2026

Friends for Life Hershey 2026 at the Hershey Lodge
Hershey, Pennsylvania | March 20-22, 2026

Friends for Life Orlando 2026 at Disney's Coronado Springs Resort
Lake Buena Vista, Florida | July 7-12, 2026

Friends for Life Anaheim 2026 at the Disneyland Hotel
Anaheim, California | October 30-November 1, 2026

Future Dates for FFL Orlando

Friends for Life Orlando 2027 at Disney's Coronado Springs Resort
Lake Buena Vista, Florida | July 6-11, 2027

Friends for Life Orlando 2028 at the Gaylord Palms
Kissimmee, Florida | July 4-9, 2028

Friends for Life Orlando 2029 at the Gaylord Palms
Kissimmee, Florida | July 3-8, 2029

Friends for Life Orlando 2030 at the Gaylord Palms
Kissimmee, Florida | July 2-7, 2030

Friends for Life Orlando 2027 at Disney's Coronado Springs Resort
Lake Buena Vista, Florida | July 8-13, 2031

Friends for Life Orlando 2027 at Disney's Coronado Springs Resort
Lake Buena Vista, Florida | July 6-11, 2032

Friends for Life Orlando 2030 at the Gaylord Palms
Kissimmee, Florida | July 5-10, 2033

Friends for Life Orlando 2030 at the Gaylord Palms
Kissimmee, Florida | July 4-9, 2034



Thank You

Thank you to our generous sponsors for making Friends for Life® Anaheim 2024 possible.

GOLD SPONSORS

dexcom **sanofi**



ADVOCACY SPONSOR



SILVER SPONSOR



BRONZE SPONSOR

