



## CLINICAL STUDY RESULTS



### More time in range\*

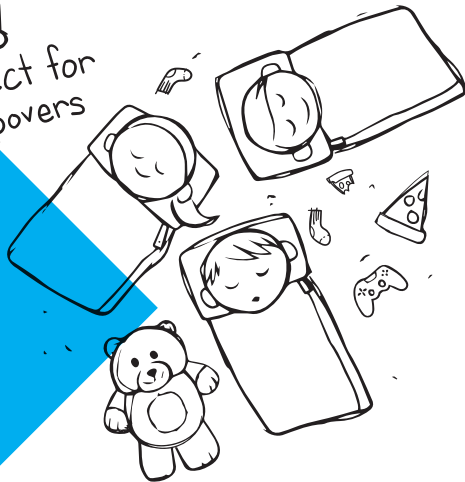
Average additional time in range per day for all participants who used Control-IQ technology.<sup>1,2</sup>



### Overnight time in range\*

Overnight sensor time in range for participants aged 6-13 while using Control-IQ technology.<sup>1</sup>

Perfect for sleepovers



Learn more about the t:slim X2 pump at [tandemdiabetes.com/controliq](https://tandemdiabetes.com/controliq)



Control-IQ technology does not prevent all highs and lows. You must still bolus for meals and actively manage your diabetes. For more info, please visit [tandemdiabetes.com/tslimX2-use](https://tandemdiabetes.com/tslimX2-use).

\*As measured by CGM. † If glucose values are predicted to be above 180 mg/dL, Control-IQ technology calculates a correction bolus using the Personal Profile settings and a target of 110 mg/dL, and delivers 60% of that value. It will do this up to once per hour as needed. An Automatic Correction Bolus will not occur within 60 minutes of a bolus that has been delivered or cancelled. ‡ If your glucose alerts and readings from the Dexcom G6 CGM do not match symptoms or expectations, use a blood glucose meter to make diabetes treatment decisions. § Additional feature updates are not currently available for the t:slim X2 insulin pump with Control-IQ technology and are subject to regulatory approvals. Future updates for some or all of Tandem's products may not be developed and may not be offered everywhere. Software updates are only available to customers who are in warranty at the time they update their pump, and may require a prescription and additional training. Charges may apply. Tandem may discontinue select software and features over time at its discretion. ^ Following your shared data requires the Dexcom Follow app. Internet connectivity required for data sharing. Followers should always confirm readings on the Dexcom G6 app or receiver (t:slim X2 pump) before making treatment decisions. References: 1. Wadwa RP. Impact of Control-IQ on glycemic control for school age children with T1D. Industry Symposium. 13th International Conference on Advanced Technologies & Treatments for Diabetes, Madrid, Spain; February 20, 2020. 2. Brown SA, Kovatchev BP, Raghinaru D, et al. Six-month randomized, multicenter trial of closed-loop control in type 1 diabetes. *N Eng J Med*. 2019;381(18):1701-1717.

**Important Safety Information:** RX ONLY. The t:slim X2 pump and Control-IQ technology are intended for single patient use. The t:slim X2 pump and Control-IQ technology are indicated for use with NovoLog or Humalog U-100 insulin. t:slim X2 insulin pump: The t:slim X2 insulin pump with interoperable technology is an alternate controller enabled (ACE) pump that is intended for the subcutaneous delivery of insulin, at set and variable rates, for the management of diabetes mellitus in people requiring insulin. The pump is able to reliably and securely communicate with compatible, digitally connected devices, including automated insulin dosing software, to receive, execute, and confirm commands from these devices. The t:slim X2 pump is indicated for use in individuals six years of age and greater. Control-IQ technology: Control-IQ technology is intended for use with a compatible integrated continuous glucose monitor (iCGM, sold separately) and ACE pump to automatically increase, decrease, and suspend delivery of basal insulin based on iCGM readings and predicted glucose values. It can also deliver correction boluses when the glucose value is predicted to exceed a predefined threshold. Control-IQ technology is intended for the management of Type 1 diabetes mellitus in persons six years of age and greater.

**WARNING:** Control-IQ technology should not be used by anyone under the age of six years old. It should also not be used in patients who require less than 10 units of insulin per day or who weigh less than 55 pounds.

Control-IQ technology is not indicated for use in pregnant women, people on dialysis, or critically ill patients. Do not use Control-IQ technology if using hydroxyurea. Users of the t:slim X2 pump and Control-IQ technology must: use the insulin pump, CGM, and all other system components in accordance with their respective instructions for use; test blood glucose levels as recommended by their healthcare provider; demonstrate adequate carb-counting skills; maintain sufficient diabetes self-care skills; see healthcare provider(s) regularly; and have adequate vision and/or hearing to recognize all functions of the pump, including alerts, alarms, and reminders. The t:slim X2 pump, and the CGM transmitter and sensor must be removed before MRI, CT, or diathermy treatment. Visit [tandemdiabetes.com/safetyinfo](https://tandemdiabetes.com/safetyinfo) for additional important safety information.

© 2020 Tandem Diabetes Care, Inc. All rights reserved. Tandem Diabetes Care, Control-IQ, and t:slim X2 are either registered trademarks or trademarks of Tandem Diabetes Care, Inc. in the United States and/or other countries. Dexcom, Dexcom G6, and Dexcom Follow are registered trademarks of Dexcom, Inc. in the United States and/or other countries. ML-1006901\_B

## t:slim X2 Insulin Pump WITH Control-IQ TECHNOLOGY

So easy a  
~~kid~~ can do it  
parent

Emma  
diagnosed 2015



TANDEM  
DIABETES CARE

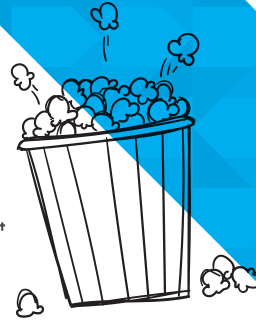
(877) 801-6901  
[tandemdiabetes.com](https://tandemdiabetes.com)

# t:slim X2 Insulin Pump

WITH **Control-IQ** TECHNOLOGY



In case my kernel count is off...



## CORRECTION BOLUS\*

Automatic correction boluses (up to one per hour) for added protection.

## ZERO FINGERSTICKS†

Dexcom G6 CGM is a small sensor that delivers real-time glucose readings every five minutes to the t:slim X2™ insulin pump and requires no fingersticks for mealtime dosing or calibration.‡ It also allows you to share with up to 10 followers.⁴

## Predicts and helps prevent highs and lows to help increase time in range.\*

Keeping your kid's blood sugar in range can be stressful. Control-IQ® advanced hybrid closed-loop technology makes it easier by using Dexcom G6 continuous glucose monitoring (CGM) values to predict glucose levels 30 minutes ahead and automatically adjusting insulin to help increase time in range (70-180 mg/dL).\*

Kinda like your phone!



Remote Software Updates<sup>5</sup>



Rechargeable Battery



Durable Housing

It senses I'm going low before you do!



*Chris*  
diagnosed 2008

\*As measured by CGM. †Users must still bolus for meals and actively manage their diabetes. For more information on automatic correction boluses, see back cover. ‡If your glucose alerts and readings from the Dexcom G6 CGM do not match symptoms or expectations, use a blood glucose meter to make diabetes treatment decisions.